

ST. PETERSBURG, FLORIDA

AL-613 (FAA)

APP CRS	Rwy Idg	<b>2864</b>
<b>005°</b>	TDZE	<b>6</b>
	Apt Elev	<b>7</b>

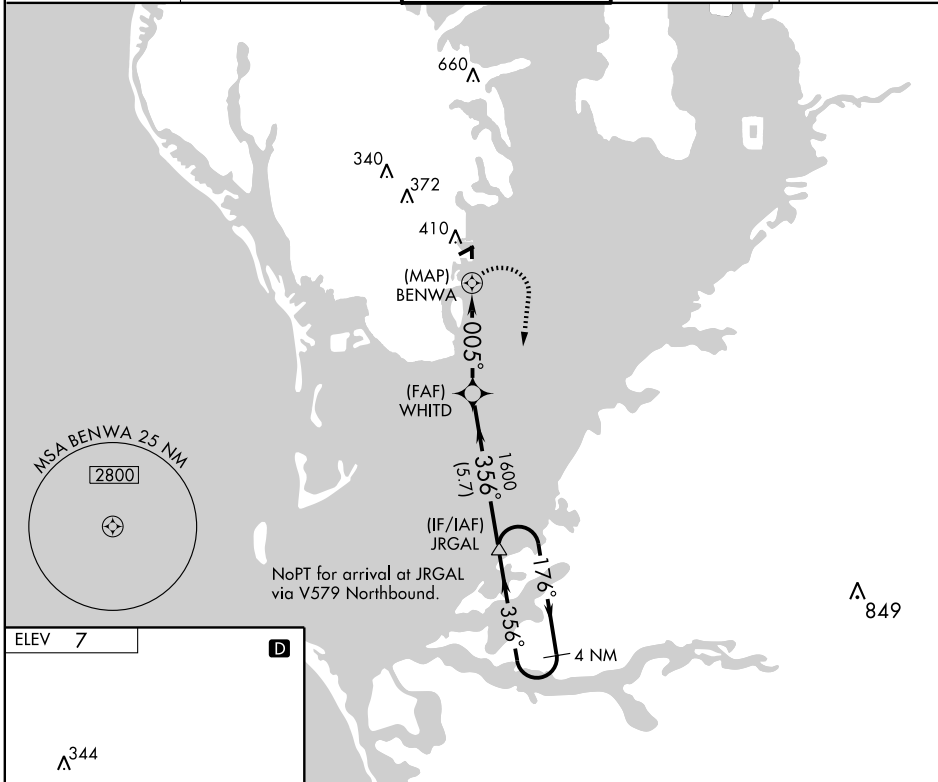
# RNAV (GPS) RWY 36

ST. PETERSBURG/ ALBERT WHITTED (SPG)

**▽** DME/DME RNP-0.3 NA. Procedure NA at night. Visibility reduction by helicopters NA.  
**▲** When local altimeter setting not received, use Tampa Intl altimeter setting and increase all MDA 40 feet and Circling Cat. B visibility 1/4 mile.

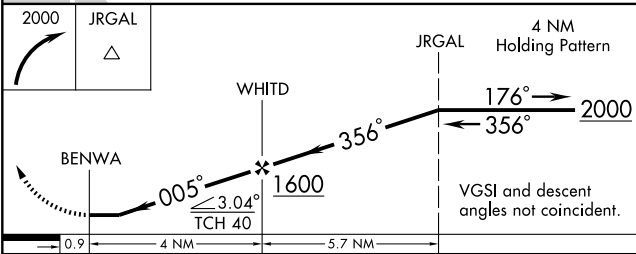
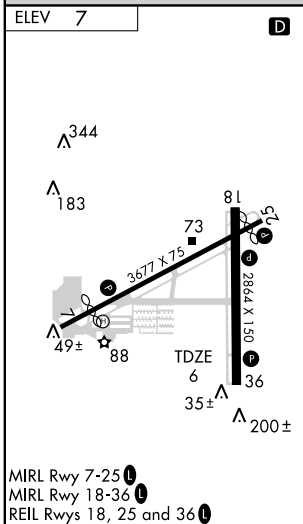
**MISSED APPROACH:**  
 Climbing right turn to 2000 direct JRGAL and hold.

ASOS <b>118.875</b>	TAMPA APP CON <b>119.65 316.05 (EAST)</b> <b>125.3 316.05</b>	<b>ALBERT WHITTED TOWER *</b> <b>127.4 (CTAF) 0 257.6</b>	GND CON <b>121.8</b>	UNICOM <b>122.95</b>
------------------------	---	--	-------------------------	-------------------------



SE-3, 04 JUN 2009 to 02 JUL 2009

SE-3, 04 JUN 2009 to 02 JUL 2009



CATEGORY	A	B	C	D
LNAV MDA	500-1	494 (500-1)		NA
CIRCLING	720-1	713 (800-1)		NA

ST. PETERSBURG, FLORIDA  
 Amdt 1 08325

27° 46' N-82° 38' W

# RNAV (GPS) RWY 36