

ST. PETERSBURG, FLORIDA

AL-613 (FAA)

APP CRS <b>172°</b>	Rwy Idg	<b>2864</b>
	Rwy Idg (night only)	<b>2824</b>
	TDZE	<b>6</b>
	Apt Elev	<b>7</b>

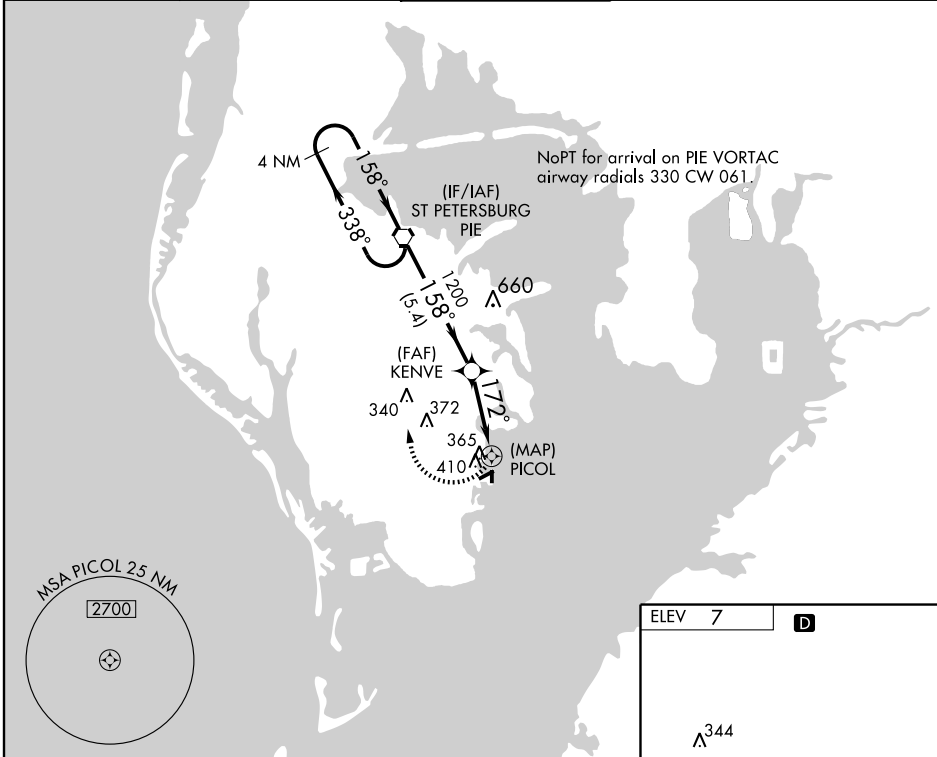
# RNAV (GPS) RWY 18

ST. PETERSBURG/ ALBERT WHITTED (SPG)

**▼** DME/DME RNP-0.3 NA. Visibility reduction by helicopters NA. When local altimeter setting not received, use Tampa Intl altimeter setting and increase all MDA 40 feet, and Circling Cat. B visibility ¼ mile. VDP NA with Tampa Intl altimeter setting.

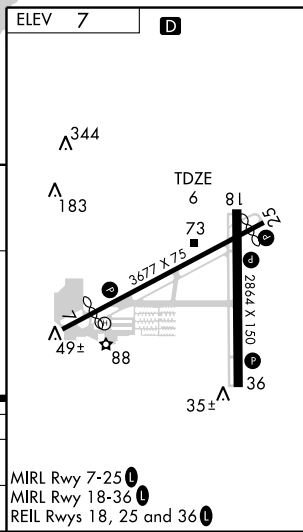
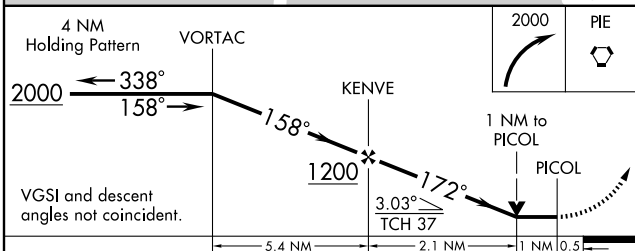
**MISSED APPROACH:** Climbing right turn to 2000 direct PIE VORTAC and hold.

ASOS <b>118.875</b>	TAMPA APP CON <b>119.65 316.05 (EAST)</b> <b>125.3 316.05 (WEST)</b>	ALBERT WHITTED TOWER * <b>127.4 (CTAF) 0 257.6</b>	GND CON <b>121.8</b>	UNICOM <b>122.95</b>
------------------------	--	---	-------------------------	-------------------------



SE-3, 04 JUN 2009 to 02 JUL 2009

SE-3, 04 JUN 2009 to 02 JUL 2009



CATEGORY	A	B	C	D
LNVA MDA	680-1 674 (700-1)		NA	
CIRCLING	720-1 713 (800-1)		NA	

ST. PETERSBURG, FLORIDA  
Orig-A 08325

27° 46' N - 82° 38' W

# RNAV (GPS) RWY 18

MIRL Rwy 7-25  
MIRL Rwy 18-36  
REIL Rwy 18, 25 and 36